

# TRANSPORTATION PRODUCT PORTFOLIO

## DESIGNING SPACES FOR GOING PLACES

Regardless of the destination, the design of transportation hubs and facilities can significantly impact the traveling experience of individuals, vehicles and goods. These designs create spaces that cater to everyday hustle and movement in a way that is both functional and welcoming.

As an industry leader in architectural aluminum systems, Kawneer's extensive product portfolio benefits the traveler's experience by improving natural light, acoustic performance and thermal efficiency. Our facade systems combine desirable aesthetics with innovative engineering, creating open, urban spaces that maximize views, natural light and withstand heavy traffic and extreme climates.



## DESIGNED TO ADVANCE, BUILT TO LAST: THE VALUE OF ALUMINUM

Aluminum is a lightweight, durable, multifaceted metal with many valuable properties. Its high strength-to-weight ratio and corrosion resistance are intrinsic characteristics that have enabled it to have a major impact on human progress over the last century.

In terms of energy efficiency, durability and design flexibility, aluminum is unrivalled as a building material. Aluminum can be extruded, rolled or welded, which adds to its ease of use and the variety of transportation projects it serves.



## WITH YOU FOR THE JOURNEY AHEAD

As a leader in architectural aluminum solutions, Kawneer's technical knowledge and versatile product range transform transportation hubs, enhancing the practical and holistic experience of travelers while improving thermal performance, aesthetics and efficiency. Desirable building aesthetics and innovative engineering are complemented by a wide range of products suitable for high traffic, hurricane impact, blast mitigation and security purposes.

From international airports and train stations to cruise ship terminals to transit centers, Kawneer can help bring your architectural vision to life.



PEOPLE



PLANET



PRODUCT

## THE HEIGHT OF SUSTAINABILITY

Kawneer believes in a balanced holistic approach to sustainability through our three pillars: Planet, People and Product. We are striving to make the world healthier, more sustainable and balanced by focusing on our business practices, product design, production, operations and our people.

### PEOPLE

Balancing responsible business cultures, environments and communities.

### PLANET

Strengthening our responsible and ethical business strategy to positively impact our world.

### PRODUCT

Balancing responsible design, engineering and manufacturing.



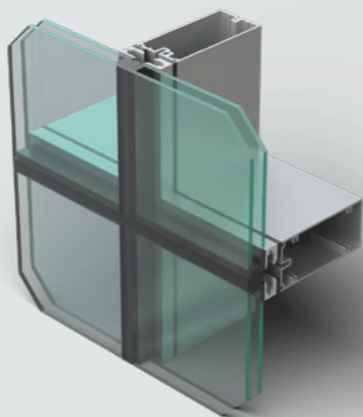
# TRANSPORTATION PRODUCT PORTFOLIO

Discover our products often used for transportation projects

## CLEARWALL® CURTAIN WALL SYSTEM

The Clearwall® Curtain Wall uses an innovative 4-sided toggle glazed system to deliver highly desired aesthetics for low-rise applications. The toggle system reduces installation labor for inspired design and tight construction.

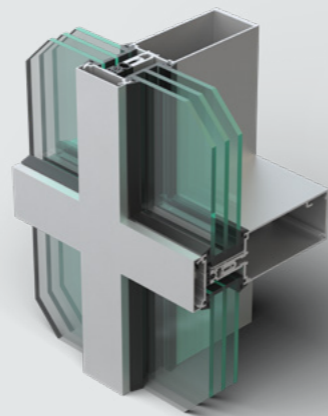
- 5/8" (15.9mm) exterior weatherseal sightline
- 2-1/2" (63.5mm) interior metal sightline
- Variable depth
- High thermal performance
- 4-sided toggle glazed
- Hurricane resistance
- Seismic (AAMA 501.4 and 501.6 standards)



## 1600UT SYSTEM™1 CURTAIN WALL

Delivers ultra-thermal performance, versatility and reliability. Ideal for low- to mid-rise applications, it utilizes thermal barrier technology to address extreme climactic conditions.

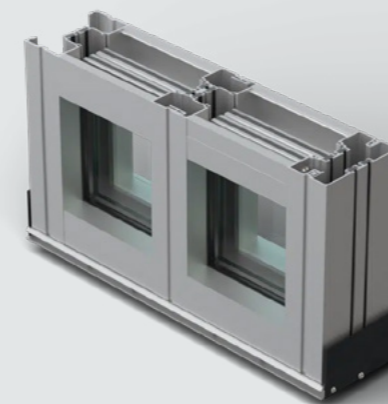
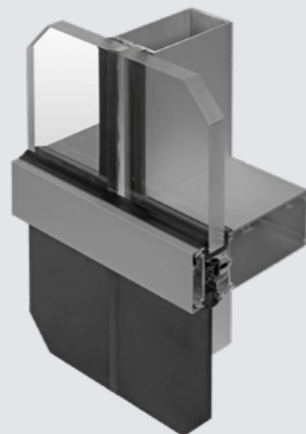
- 2-1/2" (63.5mm) sightline
- 6" (152.4mm), 7-1/2" (190.5mm) or 10-1/2" (266.7mm) system depth with 1" double-pane infill
- 6-3/4" (171.5mm), 8-1/4" (209.6mm) or 11-1/4" (285.8mm) system depth for triple-pane 1-3/4" (44.5mm) infill
- Seismic (AAMA 501.4 and 501.6 standards)
- Blast mitigation, storm shelter (ICC 500)



## 1600UT SYSTEM™2 CURTAIN WALL

Stick fabricated with 2-side SSG, the system delivers ultra-thermal performance, versatility, reliability and value.

- 2-1/2" (63.5mm) sightline
- 6" (152.4mm), 7-1/2" (190.5mm) or 10-1/2" (266.7mm) system depth with 1" double-pane infill
- 6-3/4" (171.5mm), 8-1/4" (209.6mm) or 11-1/4" (285.8mm) system depth for triple-pane 1-3/4" (44.5mm) infill
- Ultra-thermal performance
- Seismic (AAMA 501.4 and 501.6 standards)
- Vertical Structural Silicone Glazed (SSG)



## TRIFAB® VERSAGLAZE® 451/451T FRAMING SYSTEM

Designed for performance and unmatched fabrication flexibility, the Trifab® VersaGlaze® Framing System can be used on almost any project. The system offers a pre-glaze option for the existing center set screw spline assembly application, available on non-thermal, thermal and ultra-thermal frame types.

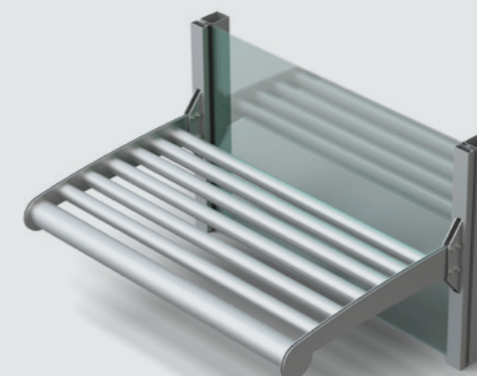
- 2" (50.8mm) sightline
- 4-1/2" (114.3mm) depth
- High-thermal performance
- Front, center, back or multi-plane glass applications
- Blast mitigation (451T), hurricane resistance
- Structural silicone glazed (SSG) options, pre-glazed options
- Seismic (AAMA 501.4 and 501.6 standards)



## 350/500 TUFFLINE® ENTRANCES

With the ability to withstand constant and rigorous usage, Tuffline® Entrances are constructed for unparalleled strength with 3/16" (4.8mm) walls throughout door and frame.

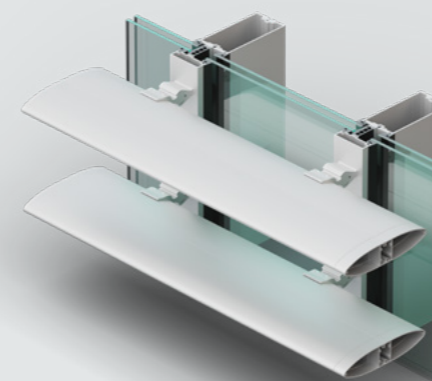
- 3-1/2" (88.9mm), or 5" (127mm) sightline
- 2" (50.8mm) depth
- 3/16" (4.8mm) wall thickness
- Non-thermal performance
- High-traffic, high-abuse application



## VERSOLEIL® OUTRIGGER SUNSHADES FOR CURTAIN WALL

Adaptable systems that offer many combinations of outriggers, louver and fascia caps, the system's versatility provides distinct aesthetics, maximum shading and energy savings.

- 30" (762mm) or 36" (914.4mm) depth
- Compatible with curtain walls
- Variable blade options
- Potential Leadership in Energy and Environmental Design (LEED) credits



## VERSOLEIL® SINGLE BLADE SUNSHADES FOR CURTAIN WALL

Pre-engineered for multiple Kawneer curtain wall systems, Kawneer's Versoleil® SunShade Single Blade System for Curtain Wall provides design flexibility and versatility in both form and function. Highly configurable blade options allow for maximum shading and energy-saving potential.

- 6" (152.4mm) to 14" (355.6mm) depth
- Compatible with curtain walls
- Variable blade and angle options
- Potential Leadership in Energy and Environmental Design (LEED) credits



## PROJECT SPOTLIGHT

### DENVER UNION STATION TRANSIT CENTER

Denver, Colorado, USA

The renovation of the Denver Union Station Transit Center aimed to reshape how Denver's residents live, work and enjoy the city. Many original details were revitalized and modernized, while still maintaining the building's historical importance. Our products helped the design achieve LEED Gold® by improving energy efficiency, occupant comfort, sound and thermal performance, as well as withstanding heavy traffic and extreme climates.

#### FEATURED PRODUCTS:

- 1600UT System™1 Curtain Wall
- 1600UT System™2 Curtain Wall
- Trifab® VersaGlaze® 451/451T Framing System
- 350/500 Tuffline® Entrances

Architect: AECOM USA, Los Angeles, CA; Tryba Architects and JG Johnson Architects, Denver, CO; Skidmore, Owings & Merrill LLP, New York, NY  
General Contractor: Continuum Partners, Denver, CO  
Glazing Contractor: El Paso Glass-Denver, Aurora, CO  
Photography: © Bob Perzel

# PROJECT SPOTLIGHT

## INTERCITY TRANSIT PATTISON BUS OPERATIONS & MAINTENANCE FACILITY

Olympia, Washington, USA

Kawneer systems played an integral role in better accommodating Olympia's Intercity Transit vehicle fleet and supporting safe, sustainable growth. The Pattison Bus Operations & Maintenance Facility features a three-story administration and operations building that serves as a fuel, wash and facilities building, together with allocated electrical charging and hydrogen fueling areas.

### FEATURED PRODUCTS:

- 1600 Wall System®1 Curtain Wall
- 1600UT System™2 Curtain Wall
- Trifab® VersaGlaze® 450 Framing System 1-3/4" sightline
- Trifab® 451UT Framing System
- Trifab® VersaGlaze® 601/601T/601UT Framing System
- 190/350/500 Standard Entrances
- 250T/350T/500T Insulpour® Thermal Entrances





## PROJECT SPOTLIGHT

### SALT LAKE CITY INTERNATIONAL AIRPORT

Salt Lake City, Utah, USA

Kawneer Collaborative helped create custom systems that withstand seismic forces in this earthquake-prone region, providing travelers at the Salt Lake City International Airport a more convenient and comfortable experience.

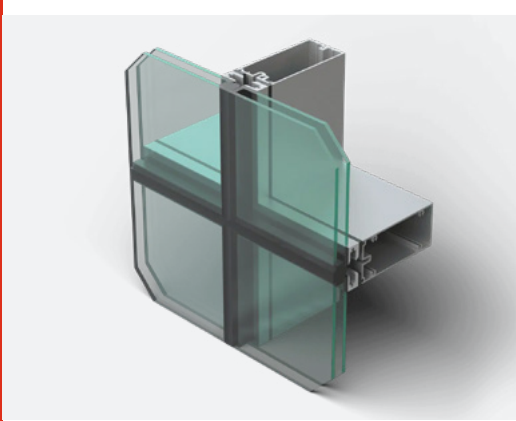
The project achieved LEED Gold® as its sustainable design helps minimize the airport's environmental footprint through high-performance glazing, daylighting, energy-efficient mechanical and lighting systems as well as an efficient configuration of terminal and gate locations.

#### FEATURED PRODUCTS:

- Custom Curtain Wall System
- 1600 SS Curtain Wall System
- 1600 Wall System®1 Curtain Wall
- 1600 Wall System®2 Curtain Wall
- Clearwall® Curtain Wall System
- Trifab® VersaGlaze® 451/451T Framing System
- 250T/350T/500T Insulpour® Thermal Entrances
- 1010 Sliding Mall Front
- PG 123® Framing



Architect: HOK, Salt Lake City, Utah  
 General Contractor: Holder | Big-D Construction, A Joint Venture, Salt Lake City, Utah  
 All images courtesy of Salt Lake City International Airport



To discover how Kawneer's architectural aluminum solutions can transform your next transportation project, get in touch with your architectural sales representative today.

To find out more, visit: [kawneer.us/projects/transportation](https://kawneer.us/projects/transportation)