



MULTIFAMILY PRODUCT PORTFOLIO

NEXT-LEVEL MULTIFAMILY LIVING

Kawneer's sustainable, high-performing products offer design flexibility for architects to create distinctive, bright and airy spaces with attractive, open views on every level.



POSITIVELY URBAN, DISTINCTIVELY KAWNEER

Our portfolio of windows, entrances, curtain wall, window wall and storefront systems deliver outstanding performance and beautiful aesthetics to help meet the ever-changing demands of multifamily design.



THE HEIGHT OF SUSTAINABILITY

We believe in a balanced holistic approach to sustainability through our three pillars: Planet, People and Product. We are striving to make the world healthier, more sustainable and balanced by focusing on our business practices, product design, production and operations and our people.



PLANET



PEOPLE



PRODUCT

MULTIFAMILY PRODUCT PORTFOLIO

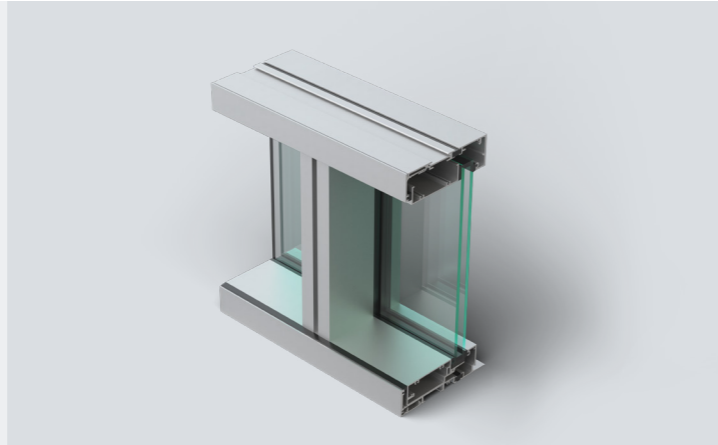
Discover our products often used for multifamily projects

WINDOW WALL

METROVIEW® FG 601T PG WINDOW WALL

Delivering the look of a true curtain wall without compromising performance. Ideal for mixed-use buildings and mid- to high-rise commercial projects, it offers versatility in design and installation.

- 2-1/4" (57.2mm) sightline
- 6" (152.4mm) depth
- High-thermal performance
- Pre-glazed fixed ribbon window wall application



FG 623 WINDOW WALL

An inside glazed system that allows for simplified fabrication and faster installation. Available in a fixed ribbon window wall application, the FG 623 Window Wall offers a screw spline and shear block fabrication and delivers hurricane resistance and thermal performance.

- 2-1/4" (57.2mm) sightline
- 6" (152.4mm) depth
- Thermal performance
- Fixed ribbon window wall application
- Hurricane resistance



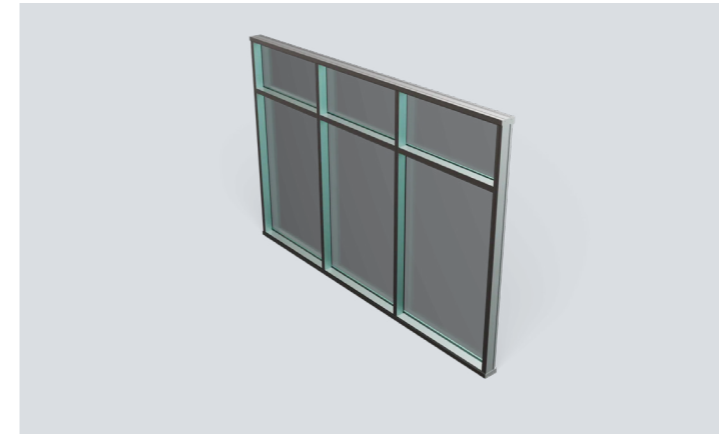
METROVIEW® FG 501T WINDOW WALL

Delivers the look of a curtain wall with a slab-to-slab framing system. Enabling floor-to-ceiling views, the FG 501T Window Wall is ideal for mid-rise commercial projects and multifamily housing.

- 2-1/4" (57.2mm) sightline
- 5" (127mm) depth
- High-thermal performance
- Fixed ribbon window wall application



RIBBON WINDOW



PG 123 FRAMING

A ribbon window/framing and multi-lite punched opening system which responds to the need for quality control, simplified fabrication and faster installation. PG 123® Framing is supplied in stock lengths or factory fabricated and offers pre-glazed capability.

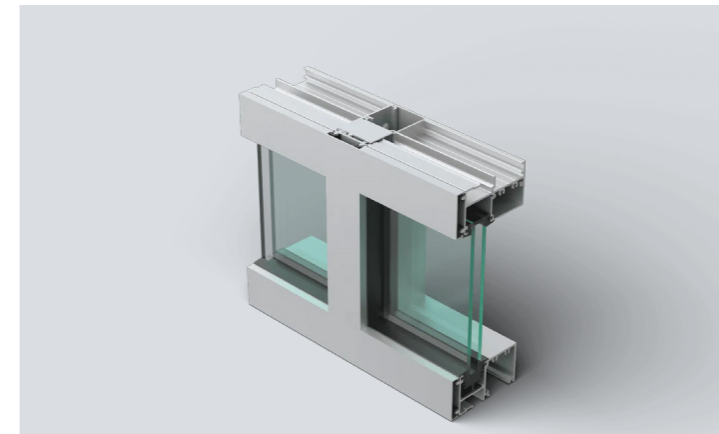
- 2-1/4" (57.2mm) sightline
- 6" (152.4mm) depth
- Thermal performance
- Pre-glazed ribbon window wall application
- Structural silicone glazed (SSG)



8400TL THERMAL WINDOWS

High performance and design flexibility. Available in fixed, single or double hung, horizontal sliding.

- 4" (101.6mm) frame depth
- Architectural window (AW)
- Thermal performance
- Fixed, single or double hung, horizontal sliding
- Blast mitigation on 8430TL single hung and 8470TL horizontal sliding
- Hurricane resistance on 8430TL single hung, 8470TL horizontal sliding and 8400TL fixed
- Ribbon window wall application option available



2250 IG (INSIDE GLAZED) CURTAIN WALL SYSTEM

Balancing performance and cost, the 2250 IG (Inside Glazed) Curtain Wall System is available in shear block and screw spline fabrication for optimum flexibility, reducing labor and material costs.

- 2-1/4" (57.2mm) sightline
- 4-1/2" (114.3mm), 6" (152.4mm) or 7-1/2" (190.5mm) system depths
- Thermal performance
- Structural Silicone Glazed (SSG) options
- Inside glazed
- Ribbon window wall application option available



2500 UT UNITWALL® SYSTEM

Combines the elegant aesthetics of a unitized curtain wall with ultra-thermal performance. The unitized framing system reduces installation time and is ideal for commercial applications and mid- to high-rise projects.

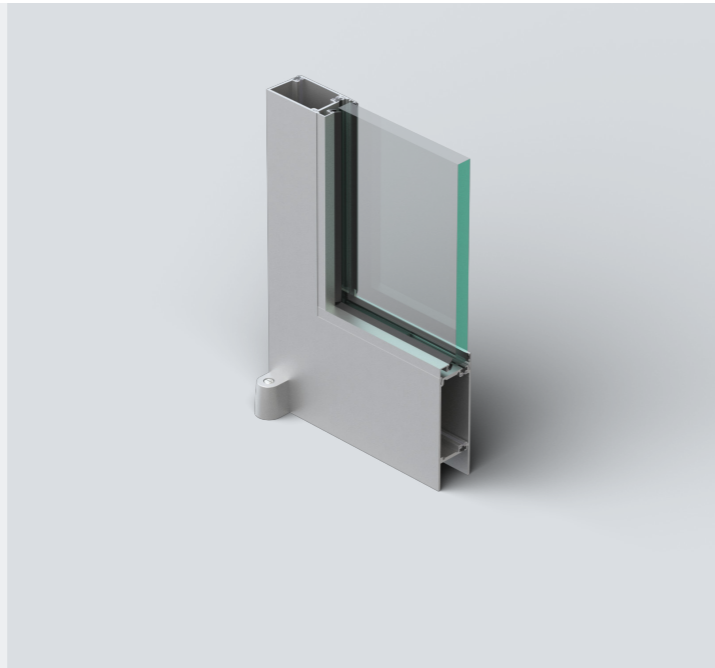
- 2-1/2" (63.5mm) sightline
- Standard infill options: 1/4" (6.4mm), 1" (25.4mm) and 1-3/4" (44.5mm)
- 7-1/2" (190.5) captured and 6-1/2" (165.1mm) 4-sided SSG/SGT depth in 1" (25.4mm) infill
- 8-1/4" (209.6) captured and 7-1/4" (184.2mm) 4-sided SSG/SGT depth in 1-3/4" (44.5mm) infill
- Ultra-thermal performance
- Mid- to high-rise applications
- Seismic tested (AAMA 501.4 and 501.6 standards)

ENTRANCES

250T/350T/500T INSULPOUR® THERMAL ENTRANCES

Superior thermal performance for a range of commercial and multifamily applications. Entrances are available in narrow, medium and wide stiles, and accommodate high traffic. The 250T/350T/500T Insulpour® Thermal Entrances offer triple pane insulating glass unit (IGU) option to meet enhanced thermal requirements. This infill choice can provide U-factors as low as 0.42* BTU/hr/ft² /°F to meet progressive energy codes.

- 2-1/2" (63.5mm), 3-1/2" (88.9) or 5" (127mm) sightline
- 2-1/4" (57.2mm) depth
- High-thermal performance
- Blast mitigation, hurricane resistance



2000T TERRACE DOORS

Designed for balcony door applications up to 10" tall, 2000T Terrace Doors are engineered for durability and quality. They have high-performance components, are available in various impact-resistant options and have a wide range of hardware choices and finishes.

- 3-3/4" (95.3mm) sightline
- 2-1/4" (57.2mm) depth
- High-thermal performance
- Hurricane resistance
- Exterior balcony application



AA®3200 THERMAL SLIDING DOORS

Meeting the challenges of thermal, coastal and hurricane resistant conditions. Available in both High Performance (AA®3200HP) and Hurricane Resistant (AA®3200IR) versions, it features contemporary hardware, clean sightlines and endless configuration options.

- 4-1/4" (108mm) sightline
- 6-3/4" (171.5mm) depth
- High-thermal performance
- Hurricane resistance
- Exterior application

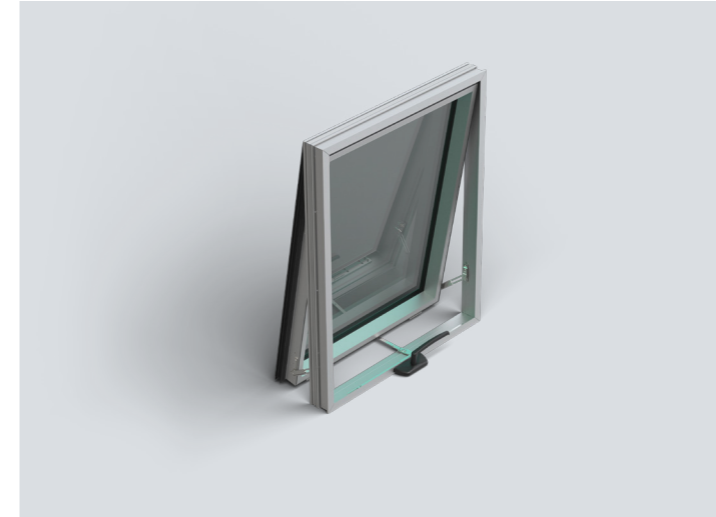


WINDOWS

GLASSVENT® WINDOWS & GLASSVENT® UT WINDOWS

Visually frameless concealed vents designed to provide a ventilation option for curtain wall with high thermal performance.

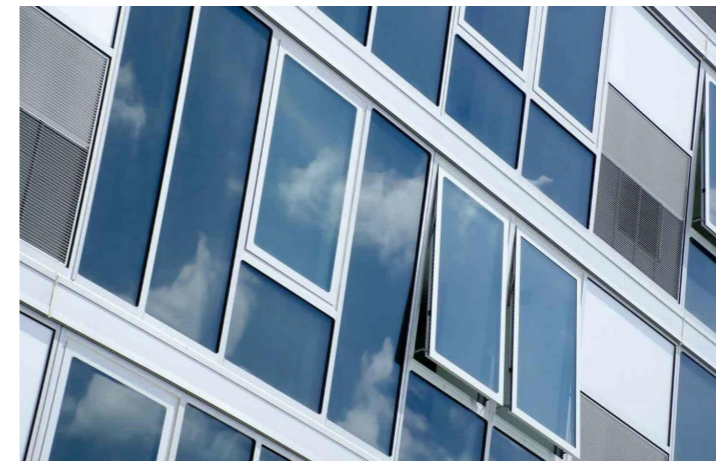
- 3-1/8" (79.4mm) or 3-7/8" (98.4mm) depth (CW)
- 4-3/8" (111.1mm) or 5-1/8" (130.2mm) depth (AW)
- Commercial grade window (CW) and architectural grade window (AW)
- Ultra-thermal performance
- Casement or projecting configuration
- Blast mitigation (AW only), hurricane resistance (AW only)



8225TL THERMAL WINDOWS

Combining design flexibility and high performance, offering engineering and superior aesthetics that last. Adaptable to every building envelope and design possibility, the 8225TL Windows meets every need.

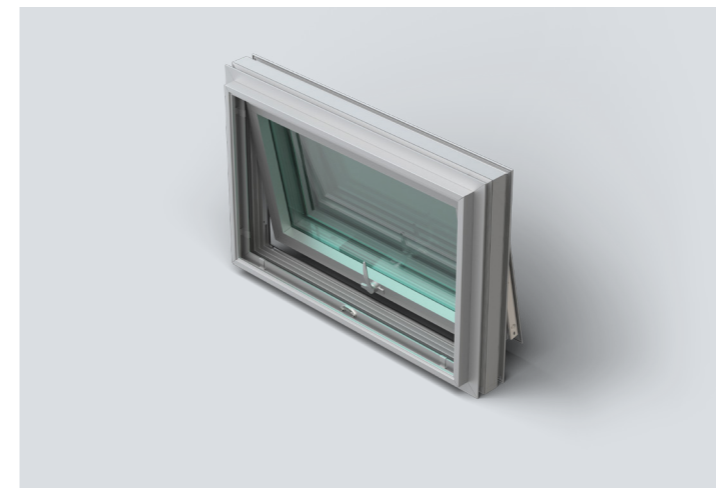
- 2-1/4" (57.2mm) depth
- Architectural window (AW)
- Thermal performance
- Fixed, casement or projecting configuration
- Hurricane resistance



OPTIQ® AA®4325 SERIES WINDOWS

Reaching a new level in thermal performance due to the unique features integrated into its design. The built-in thermal intelligence makes the AA®4325 Series the smartest window with thermal continuity, reduction of thermal transmission and interior heat management.

- 3-1/4" (82.6mm) depth
- Architectural window (AW)
- Ultra-thermal performance
- Fixed, projecting, casement or tilt-turn
- Blast mitigation, hurricane resistance

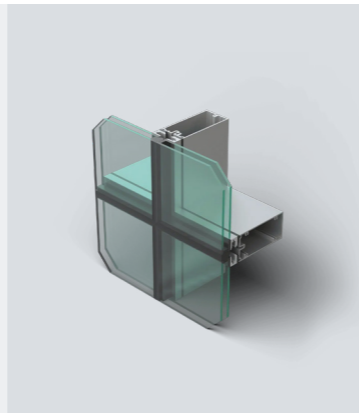


CURTAIN WALL

CLEARWALL® CURTAIN WALL SYSTEM

Innovative 4-sided toggle glazed system to deliver highly desired aesthetics for low-rise applications. The toggle system reduces installation labor for inspired design and tight construction.

- 5/8" (15.9mm) exterior weatherseal sightline
- 2-1/2" (63.5mm) interior metal sightline
- Variable depth
- High thermal performance
- 4-sided toggle glazed
- Hurricane resistance
- Seismic tested (AAMA 501.4 and 501.6 standards)



1600UT SYSTEM™1 & SYSTEM™2 CURTAIN WALL

Ultra-thermal performance, versatility and reliability. Ideal for low- to mid-rise applications, it utilizes thermal barrier technology to address extreme climactic conditions.

- 2-1/2" (63.5mm) sightline
- 6" (152.4mm), 7-1/2" (190.5mm) or 10-1/2" (266.7mm) system depth with 1" double-pane infill
- 6-3/4" (171.5mm), 8-1/4" (209.6mm) or 11-1/4" (285.8mm) system depth for triple-pane 1-3/4" (44.5mm) infill
- Ultra-thermal performance



STOREFRONT FRAMING

TRIFAB® VERSAGLAZE® 451/451T/451UT FRAMING SYSTEM

Designed for performance and unmatched fabrication flexibility, the Trifab® VersaGlaze® Framing System can be used on almost any project. Trifab® VersaGlaze® Framing System also offers a pre-glaze option for the existing center set screw spline assembly application, available on non-thermal, thermal and ultra-thermal frame types. Pre-glaze units can be completely fabricated and glazed in the shop, minimizing job-site costs and enhancing field-installed quality.

- 2" (50.8mm) sightline
- 4-1/2" (114.3mm) depth
- High-thermal performance
- Front, center, back or multi-plane glass applications



SUNSHADES

VERSOLEIL® SUNSHADES FOR CURTAIN WALL

Pre-engineered for multiple Kawneer curtain wall systems, Kawneer's Versoleil® SunShade Systems for Curtain Wall provide design flexibility and versatility in both form and function. Highly configurable blade options allow for maximum shading and energy-saving potential.

- Single Blade System: 6" (152.4mm) to 14" (355.6mm) depth
- Outrigger System: 30" (762mm) or 36" (914.4mm) depth
- Compatible with curtain wall systems
- Variable blade and angle options
- Potential Leadership in Energy and Environmental Design (LEED) credits





KENECT NASHVILLE

Nashville, Tennessee, USA

MODERN RESIDENCES THAT ENABLE HUMAN CONNECTIONS

FEATURED PRODUCTS

- MetroView® FG 601T PG Window Wall
- 1600 Wall System®1 Curtain Wall
- 2000T Terrace Doors
- NX-3400 Windows
- 350 Medium Stile Entrances

AT A GLANCE

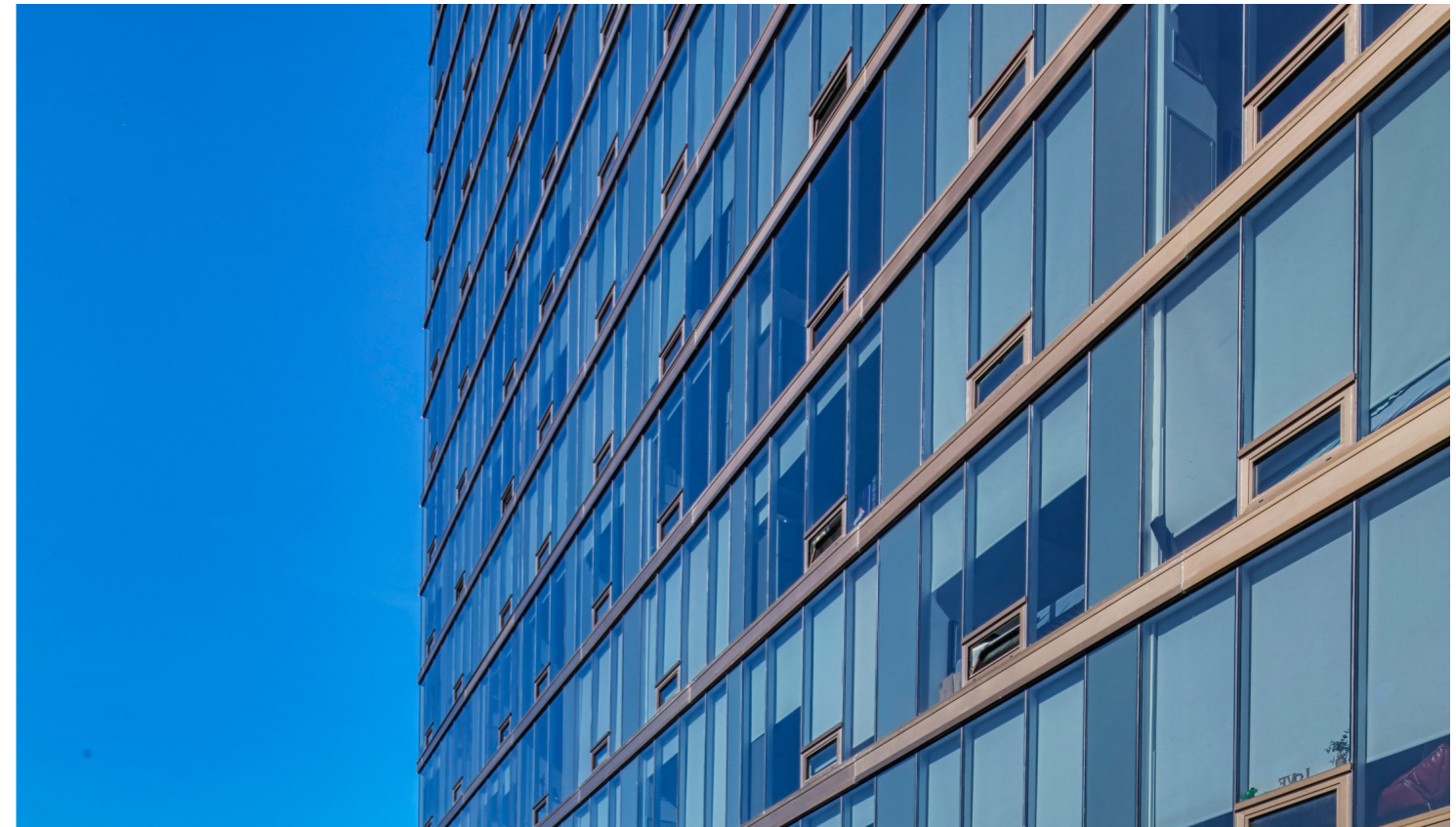
Located in the heart of Midtown Nashville, between Vanderbilt University and Music Row, Kenect Nashville occupies a 600-square-foot space. Housing 420 residents over 20 stories and providing 24,000 square feet of retail space, this project redefines modern living in Music City.

One of the project's goals was to create a light, airy urban 'hot spot' for the residents and community to thrive. Kawneer products were instrumental in creating spaces that allow occupants to adopt a new way of living and using spaces in which the community can work, socialize, exercise and thrive with their neighbors, family and friends.

THE PRODUCTS IN PLACE

The Kawneer Collaborative team modified products to fulfill structural requirements, specifically the adaptation of the window wall system to meet the ½" deflection from the building surround. To achieve this, the team customized the standard MetroView® FG 601T PG system to allow for 7/8" deflection in floor slabs. This was accomplished by cutting new dies for the head and sill receptors, achieving the structural requirements within the project's budget while also achieving the clean lines and performance associated with a curtain wall.

Additional Kawneer products that were utilized on the project include 1600 Wall System®1 Curtain Wall, 2000T Terrace Doors, NX-3400 Windows and 350 Medium Stile Entrances.



ARCHITECT: Perkins&Will, Chicago, Illinois

GLAZING CONTRACTOR: Koch Corporation, Louisville, Kentucky

DEVELOPER: Akara Partners, Chicago, Illinois

GENERAL CONTRACTOR: John McHugh Construction, Chicago, Illinois

Photography: ©The Apple Group



ALEXAN ON 8TH
Atlanta, Georgia, USA

URBAN INNOVATIONS FOR EVERYONE

FEATURED PRODUCTS

- AA®425 Thermal Entrances
- 350 Medium Stile Entrances
- FG 623 Window Wall
- 2000T Terrace Doors
- 1600 Wall System®1 and System®3 Curtain Wall
- Trifab® VersaGlaze® 450 Framing System

AT A GLANCE

Situated in the heart of Atlanta's Midtown neighborhood, Alexan on 8th is a 20-story, high-rise apartment building featuring more than 9,000 square feet of retail space, a rooftop park, technology lounge, state-of-the-art fitness center, pet spa and more. Residents and guests are greeted with the hospitality and charm of a world-class hotel on the ground floor and later provided additional resort-style amenities.

Delivering comfort, luxury and first-rate amenities was essential to the project developer. Kawneer and the glazing contractor worked with the architects to deliver a range of custom and standard glazed solutions that would help increase occupant comfort through accessibility, enhanced natural daylight and thermal performance.

THE PRODUCTS IN PLACE

The team engineered custom balcony entrances utilizing a custom sill solution, since the FHA only allowed for a 3/4" maximum ramp height. Kawneer collaborated with Glass Systems to modify the sill to meet FHA requirements and ensure the balcony doors would perform up to standards.

Kawneer's inside glazed FG 623 Window Wall System was utilized to help simplify fabrication, increase thermal performance and provide faster installation. Further, Kawneer's AA®425 Thermal Entrances delivered high thermal performance, helping keep occupants comfortable and safe. Additional products used include Kawneer's 2000T Terrace Doors, Trifab® VersaGlaze® 450 Framing System and 1600 Wall System®1 and System®3 Curtain Wall.



ARCHITECT: Rule Joy Trammell + Rubio, LLC, Atlanta, Georgia

GLAZING CONTRACTOR/INSTALLER: Glass Systems, Lithonia, Georgia

DEVELOPER: Trammell Crow Residential, Atlanta, Georgia

GENERAL CONTRACTOR: Brasfield & Gorrie, Atlanta, Georgia

Photography: ©The Apple Group



To discover how Kawneer's architectural aluminum solutions can transform your next multifamily project, get in touch with your architectural sales representative today.

To find out more, visit: kawneer.us/multifamily