

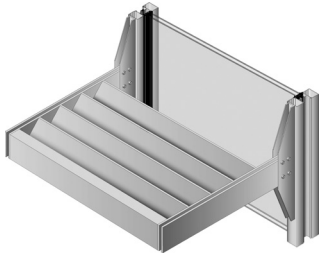
A Versatile Combination of Aesthetics, Performance and Energy Conservation



Kawneer's Outrigger and Single Blade Systems for Storefront are the latest addition to our versatile Versoleil™ SunShade platform. Market demand for energy conservation in commercial building design is increasing, and the use of sunshades continues to move down the building. The addition of storefront options to Kawneer's innovative Versoleil™ SunShade offering provides more solutions for maximizing shading and energy-saving potential. The Outrigger System's combinations of support arms, louver blades and fascia caps provide increased aesthetic choices, and the Single Blade System's common component design and blade options offer versatility in both form and function. Whether it's the Outrigger System or the Single Blade System, Versoleil™ SunShades provide a pre-engineered, easy-to-install option for multiple storefront system applications.

ENHANCED VERSATILITY

Versoleil™ SunShade Outrigger and Single Blade Systems for Storefront include options in several configurations that enhance aesthetics while increasing the comfort and efficiency of the building. Both the Outrigger System and Single Blade System options deliver an unmatched breadth and depth of application – all from a single-source supplier. Not only are Versoleil™ SunShades tough performers, engineered and tested to withstand combined wind, snow and dead loads, they can also help contribute to Leadership in Energy and Environmental Design (LEED®) certification. Versoleil™ SunShades continue to set the industry standard for form and function.



OUTRIGGER SYSTEM

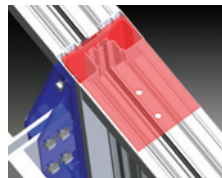
The Outrigger System's innovative construction allows designers to mix and match components while maintaining aesthetic consistency between the curtain wall and storefront elements of the building façade. The system's standard 30" depth with outrigger arm, blade

and fascia options address specific project needs and provide superior shading capabilities that reduce solar heat gain to help maximize energy savings and reduce glare.

Versoleil™ Outrigger SunShade Blade Options
(From left) circular, airfoil, arch, planar, flare, wave, infinity, diamond/square



Beyond shading interiors and conserving energy, Versoleil™ SunShades add aesthetic appeal to any building envelope. The Outrigger System gives architects increased design freedom with the ability to be seamlessly incorporated into multiple Kawneer storefront framing systems. Sleek blade designs that marry functionality with aesthetics include circular, airfoil, arch, planar, flare, wave, infinity and diamond/square. Standard outrigger 30" depth options with matching fascia includes round, square, wedge and curved.

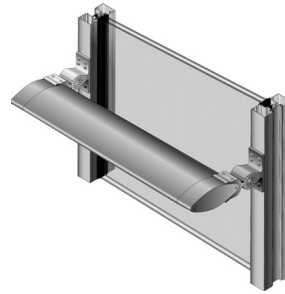


Welding a plate to internal steel (shown in red) provides for secure attachment of the sunshade via mounting brackets (shown in blue) to the framing system. Additionally, the welded plate solidifies attachment of the framing system to the building structure. (Trifab™ VersaGlaze™ 451T Screw Spline Framing System shown – other storefront systems are similar.)

PERFORMANCE

Versoleil™ SunShades are tough performers and have been engineered and tested to withstand both wind loads and snow loads. For design solutions regarding loading, attachment and anchor conditions, please consult with your Kawneer representative.

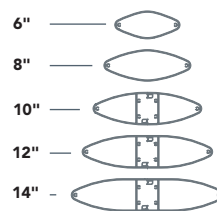
Calculating the shading performance of Versoleil™ SunShades is easier with Kawneer's Solector® Sun Shading Estimator. Located on Kawneer.com and developed for use early in the design phase, the easy-to-use tool can compare shading performance of two scenarios using Versoleil™ SunShades on a façade.



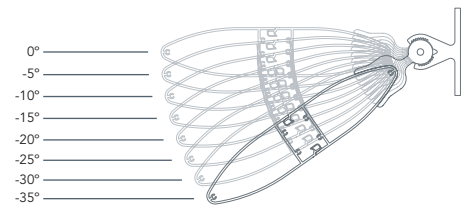
SINGLE BLADE SYSTEM

The Versoleil™ SunShade Single Blade System adds aesthetic appeal to any building envelope. Seamlessly incorporated into multiple storefront framing systems in horizontal configurations, the Single Blade System gives architects increased flexibility and several combinations to craft their vision.

Its unique, highly configurable design with sleek airfoil-shaped blades, eight different horizontal blade angle settings and depth selections of 6", 8", 10", 12" and 14" provides nearly endless possibilities to create dramatic effects, sightlines and shade lines.



Blade Sizes



Horizontal blade angle settings: 8 different angles ranging from 0° to -35° with 5° increments.

The innovative design allows for variation of blade angles during installation based on sun angle and building orientation. To maximize energy-saving potential, reduce solar heat gain and increase occupant comfort and productivity, blades can be oriented horizontally, mounted perpendicular to the façade or tilted to specific angles.

SUSTAINABILITY

When Versoleil™ SunShades are strategically placed, they allow for maximum daylighting while minimizing direct sunlight penetration and reducing solar heat gain. In addition to increased sun control and energy savings, Versoleil™ SunShades can help earn LEED® credits in multiple categories.

FOR THE FINISHING TOUCH

Architectural Class I anodized aluminum finishes are available in clear and color choices. Painted finishes, including fluoropolymer, that meet AAMA 2605 standards and solvent-free powder coatings that meet AAMA 2604 standards are available in a variety of color choices.