

Shades of Versatility in Form and Function



Versoleil™ SunShades, the next generation of Kawneer's sunshade platform, comprise a broad range of versatile products designed to suit almost any project under the sun. Pre-engineered for multiple Kawneer curtain wall systems, the common component design offers versatility in both form and function. Versoleil™ SunShades provide design flexibility to incorporate sunshades easily into any building envelope to help create your vision. All this, plus highly configurable blade options for maximum shading and energy-saving potential.

PERFORMANCE

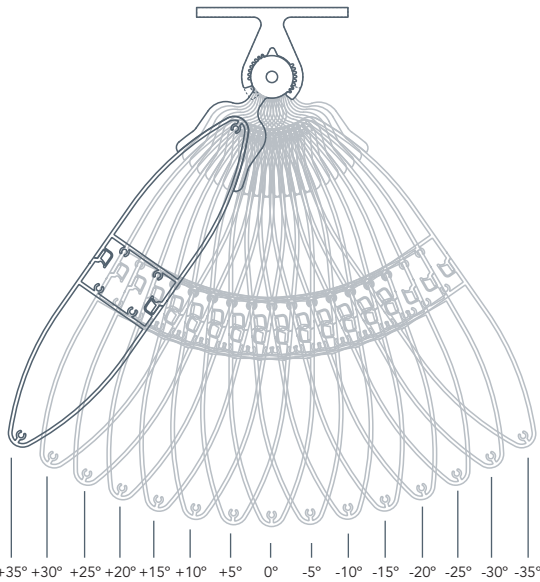
With its multiple single blade options as a standard offering, Versoleil™ SunShades deliver an unmatched breadth and depth of application – all from a single-source supplier. The innovative design allows for variation of blade angles during installation based on sun angle and building orientation. To maximize energy-saving potential, reduce solar heat gain and increase occupant comfort and productivity, blades can be oriented horizontally or vertically, mounted perpendicular to the façade or tilted to specific angles. The product has been designed and tested to withstand combined wind, snow and dead loads.

FABRICATION AND INSTALLATION

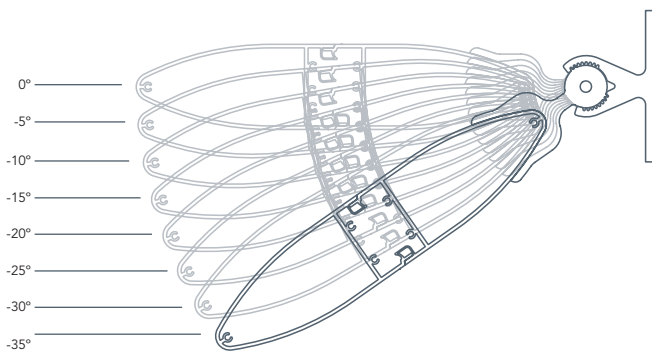
The Single Blade System can be used on almost any project. Easily assembled, it utilizes common components across all applications. With a uniform approach of attaching sunshades to a wide variety of Kawneer curtain wall platforms, it allows for quick familiarity with the system and installation practices.

The considerable savings in fabrication and attachment time compared with custom sunshades creates economies in budgets and construction schedules.

In addition, the bracket accepts all blade sizes, including our 10", 12" and 14" products. These larger blades, extruded as two smaller symmetrical halves, snap together simply and securely. This design not only eases handling during fabrication and installation, but also reduces inventory costs.



Vertical blade angle settings: 15 different angles ranging from +35° to -35° with 5° increments.



Horizontal blade angle settings: 8 different angles ranging from 0° to -35° with 5° increments.



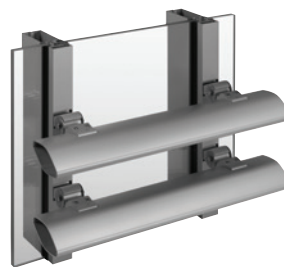
Blade Sizes

SUSTAINABILITY

Versoleil™ SunShades can help earn Leadership in Energy and Environmental Design (LEED®) credits in three categories: Materials & Resources – Recycled Content; Energy & Atmosphere – Optimize Energy Performance; and Indoor Environmental Quality – Daylight and Views. When Versoleil™ SunShades are strategically placed, they allow for maximum daylighting – all while minimizing direct sunlight penetration and reducing solar heat gain.

AESTHETICS

Beyond shading interiors and conserving energy, Versoleil™ SunShades easily add aesthetic appeal to any building envelope. Seamlessly incorporated into multiple curtain wall platforms in horizontal and vertical configurations, the Single Blade System gives architects increased flexibility and several combinations to craft their vision. Its unique, highly configurable design with sleek airfoil-shaped blades and depth selections of 6", 8", 10", 12" and 14" provides nearly endless possibilities to create even more dramatic effects, sightlines and shade lines.



6" Single Blade Horizontal SunShade shown at -15° angle on 1600 SS Curtain Wall



14" Single Blade Vertical SunShade shown at -15° angle on 1600 SS Curtain Wall

FOR THE FINISHING TOUCH

Architectural Class I anodized aluminum finishes are available in clear and Permanodic™ color choices.

Painted finishes, including fluoropolymer that meet or exceed AAMA 2605, are offered in many standard choices and an unlimited number of specially designed colors.

Solvent-free powder coatings add the "green" element with high performance, durability and scratch resistance that meet the standards of AAMA 2604.

